

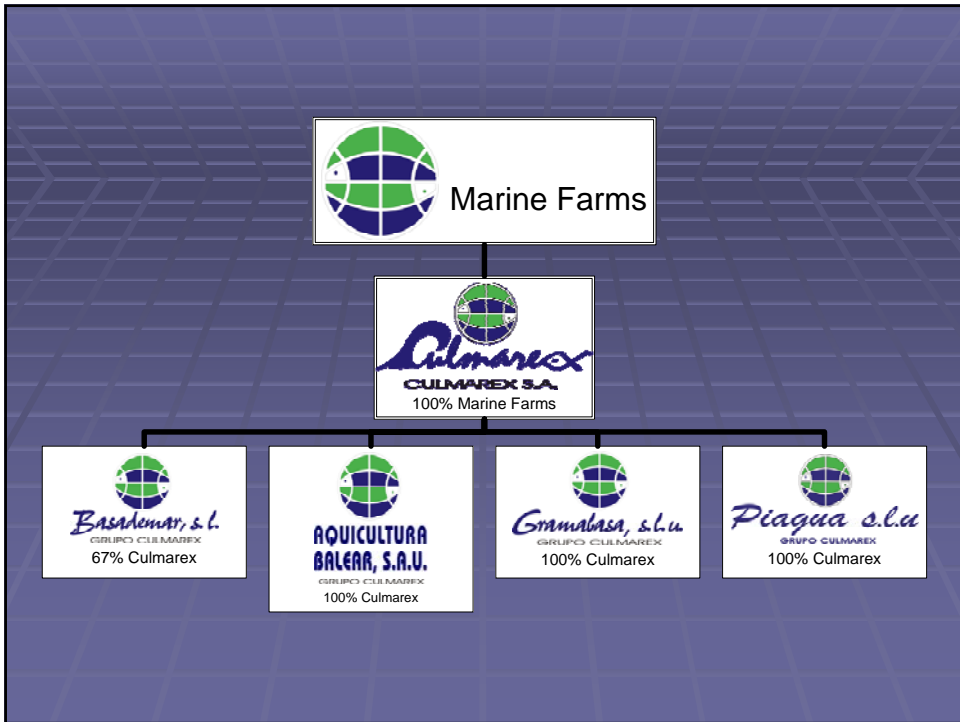


Lubina



Dorada

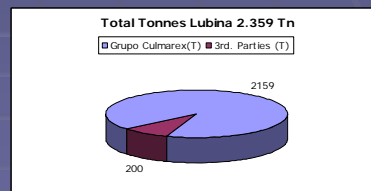
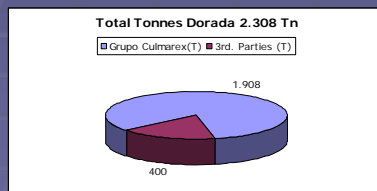




			Projection		2007
On growing Farms		Licensed capacity (T)	2005 sales T.	2006 sales T.	
Culmarex	Aguilas	1000	1496	1400	1272
Basademar	Altea	1400	481	1012	1021
Gramabasa 1	Guardamar	800	156	300	754
Gramabasa 2	Guardamar	1500			
Es Murterar	Mallorca	200	88	135	126
Piagua	Almeria	1500	702	1220	1260
Total Group companies		6400	2923	4067	4433
3rd party suppliers			353	600	1096
TOTAL TONNES			3276	4667	5529
HATCHERY					
ABSA Mallorca					
No: juveniles sold to group(million)			7,93	7,50	9,76
No: Juveniles sold to 3rd.parties(million)			4,83	5,20	5,81
Total No: Juvenile sales(M)			12,76	12,70	15,57
Total INCOME-€million			23,4	33,1	39,8

No. Employees **217**
(as at 011106)

	2.006	Projection	
	Dorada	Lubina	Total
Grupo Culmarex(T)	1.908	2.159	4.067
3rd. Parties (T)	400	200	600
Total (tonnes)	2.308	2.359	4.667
% distribution- total	49%	51%	
% distribution- Grupo	47%	53%	
% income- TOTAL	40%	60%	
Spanish Production (T)	22.000	8.000	30.000
Grupo Culmarex share	10,49%	29,49%	15,6%





Packing Plant



Absa



Es Murterar

